



2021 Koestler Awards Guidance

Unlock the talent inside

The Koestler Awards for arts in criminal justice started in 1962. Each year over 3,500 people in custody and in the community share their creative work by taking part. The Koestler Awards provide feedback and encouragement to entrants of all abilities in visual art, design, writing and music.

Contents	
Entering the Koestler Awards	02
What you can enter: artforms	05
Terms & conditions of entry	13
5 top things to remember	21



Outdoor UK exhibition, Southbank Centre, London



Thank-you, Stirling Council Justice Service, Highly Commended Award for Portrait

Making many creative art pieces has helped me in my emotional moments, it has also helped me in coming to terms with my prison sentence.
2020 Koestler Awards Entrant

Entering the Koestler Awards

Unlock feedback on your creative work, chances to win cash awards and opportunities for mentoring, exhibition, publication and sales.



UK exhibition, Southbank Centre, London

Recognition for your work

We give over 2,000 Koestler Awards each year. Every entrant gets a certificate and many winners receive a cash prize. The total prize money is over £30,000.

Platinum	£100 + certificate
Gold	£60 + certificate
Silver	£40 + certificate
Bronze	£20 + certificate
Special Awards	£25 + certificate
Highly Commended	certificate
Commended	certificate
Participation	certificate

Prestigious judges

Entries are judged by over 100 experts from different fields. 2020 judges included Bob and Roberta Smith, George the Poet, Hot Chip, Jeremy Deller and Sarah Lucas!

Extra encouragement for new entrants

Let us know if this is the first time you have taken part in the Koestler Awards on the entry form and you will be considered for Awards specially reserved for new entrants.

We give you feedback

Entrants receive feedback on their work from the judges or the Koestler Arts team, who give their responses to the work and ideas on how to develop it.

Fast feedback for those under 18

All entrants under 18 can receive their certificate and feedback within 4 weeks of entry and enter at any point of the year. The parcel containing the entry must be marked 'Under 18s Fast Feedback Programme' to be eligible. Please note, there is a new Under 18s Entry Form.

Sales

We can try and sell your visual arts and crafts on your behalf. We do this online, in our building and at our exhibitions.

UK exhibition, Southbank Centre, London

The 2021 UK exhibition will be back in its usual gallery in the autumn at the Southbank Centre in London. Artist Camille Walala will make the selection from all the entries to the 2021 Koestler Awards. Camille is a French-born artist living and working in East London. Over the last decade, she has become renowned for her large-scale murals and installations in public spaces around the world. Characterised by bold patterns and vibrant colour, her mission is to spread joy and positivity. As well as work exhibited on the gallery walls, the national exhibition features events, performances and tours.

Exhibitions and events across the UK

We also showcase local artwork in different areas of the UK each year. This gives work in those areas an extra chance to be seen. Covid-19 has disrupted museum and art gallery schedules, so we will confirm later in the year if we can proceed with hoped-for shows in Scotland and Northern Ireland.

Displays of work throughout the year

Some work is selected to be shown in displays in a wide range of public spaces including offices, restaurants and prison visit halls.



Camille Walala photographed by Charles Emerson

Marketing

We may reproduce your work online, on our merchandise or in publications. We may send reproductions of your work to the media and other organisations to publicise our work and exhibitions, which is a great chance to get your work seen by a wider audience.

Membership scheme

The Associates Programme is a membership scheme for our entrants. Entrants opting into the scheme will benefit from greater contact with Koestler Arts through a regular Koestler newsletter. Sign up to the Associates Programme by ticking the box on the entry form.

Mentoring

We run an arts mentoring scheme for entrants to the Koestler Awards who want to develop their work further. Eligible entrants will receive further information about this bespoke programme after entering.

What you can enter: artforms



Let's Celebrate International Women's Day, HMP Bronzefield, Weavers' Company Platinum Award for Fashion

Multi-artform

1. Themed Category: Together

Have a go at producing a poem, drawing, painting, song or any other Koestler artform using the word 'Together' as a theme. Written work and DVDs/CDs submitted into this category will not be returned to you and will be disposed of securely following the Awards.

2. Arts Project 📷

A project with components that cover several Koestler Awards artforms, created to engage people as artists, participants and audience. Your entry should include:

- » the aims of the project
- » the artforms involved
- » a documentation of the artistic outcomes (photos, DVD, audio, book, etc.)
- » the organisation/ individual(s) that co-ordinated the project
- » an overview of who the participants/artists/ audience were and the benefits of, or response to, the project (include quotes or figures)



Reflection, Colnbrook IRC, Gold Award for Printmaking

Writing

3. Flash Fiction and Short Story

A short story, flash fiction or part of a novel. Entries must be no more than 5 sides of A4 paper.

4. Longer Fiction and Novel

A longer story, novel or part of a novel. Entries must be 6 sides of A4 paper or more.

5. Non-Fiction, Blog, Essay, Article and Review

One piece of factual writing as if written for a magazine, paper, biography, blog or non-fiction book.

6. Life Story

Autobiographical prose of any length.

7. Braille

Braille text, embossed illustrations and diagrams.

8. Poem

Enter one poem as one entry.

9. Poetry Collection

10 or more poems arranged in order with an overall title – in book or pamphlet form, or as if being submitted for publication. Short collections featuring the strongest poems are encouraged.

10. Anthology

A volume of mixed writing, such as a mixture of poems and fiction or essays. Short anthologies featuring the strongest pieces of writing are encouraged.

11. Stage Play – in partnership with Synergy Theatre Project

Script with stage directions – a short play, full-length play or part of one. Additional guidelines are available on request and on the Koestler Arts website.

12. Radio Play

Script with studio directions – a full-length drama or part of one.

13. Screenplay

Script with directions for TV or film.

14. Song Writing

Lyrics for a song – not including the musical score or any recorded element. Please state the genre of the music piece on the entry.

Please retain copies of all written work, as submitted entries will not be returned. We will dispose of your work securely.

Number the pages and put the title on every page.

If you write about real events, do not identify any individuals.

Performance and audio

15. Spoken Word

Audio recording of a performance or reading of an original work.

16. Performance

DVD, video or audio recording of a performance. This includes theatre, dance and performance art, as well as audio performances of existing scripts, poems or stories. E.g. this could be a reading of a story on CD (ideal for Storybook Dads) or a DVD of a dance routine. Audio recordings of original texts should be entered in Spoken Word.

17. Radio Production

Audio recording of an original broadcast radio production or an edited compilation, e.g. spot/advert, documentary or interview. Up to 30 mins.

18. Music Composition

A written score (not a recording) with or without lyrics. If lyrics are included, say whether or not they are original.

19. Choral Music

A recording of a performance of choral music by a group of singers. Please state on the disc or packaging whether the music and lyrics are original or existing.

20. Singer-Songwriter – Original

A recording of a performance by a musician or group, that writes, composes and sings their own material including lyrics and melodies.

21. Cover Version

A recording of an individual or group performing an existing song. Your own interpretation of the song is encouraged.

22. Instrumental

A recording of a musician or group performing their own or existing music with no lyrics. Please state on the disc or packaging whether the music is original or existing.

23. Hip Hop, Rap and Grime

A recording of a musician or group performing their own material.

24. Computer Generated Music

A recording of original music generated entirely, or mostly, using computers.

Please retain copies of all performance and audio entries, as submitted entries will not be returned. We will dispose of your work securely.

Write the length of the recording on the disc or packaging.

Make clear which elements of the production were carried out by entrants and which by professionals.

If you are entering pieces in different artforms, make sure that they are on different CDs, DVDs etc.

Film and animation

25. Film

Dramatic or documentary film on DVD.

26. Animation

Animated film on DVD.

Please retain copies of all film and animation entries, as submitted entries will not be returned. We will dispose of your work securely.

Write the length of the film or animation on the disc or packaging.

Make clear which elements of the production were carried out by entrants and which by professionals.

We will not publicly screen any film entry without first consulting the establishment that submitted it.

If you are entering pieces in different artforms, make sure that they are on different DVDs.



Audio entry on display at Southbank Centre

Fine art

27. Painting

A painting mainly in oil, acrylic or tempera.

28. Watercolour and Gouache

29. Drawing

Pencil, charcoal, felt pen or ink.

30. Pastel

If possible, use fixative to prevent smudging.

31. Portrait

All portraits, in 2D visual artforms should be entered into this category.

32. Mixed Media

2D work including collages, silk painting or use of unusual materials.

33. Sculpture 📷

Sculptures may be made with any materials but we recommend items made in clay are entered into the Ceramics category.

34. Digital Art

A digital print (with little or no text) produced or formatted by computer.

35. Graphic Novel

A full length graphic novel or up to 3 short comics, comic strips or one-off cartoons, with or without text.

36. Mural and Wall Hanging 📷

37. Printmaking

Block prints, etchings, lino prints, mono prints, screen prints, handprinted wallpaper etc.

38. Photography

An original photograph as an individual print, or up to 5 in a portfolio or book (counted as one entry). Any size or shape, colour or black-and-white. Slides and discs are not accepted.

39. Ceramics 📷

A vase, plate, bowl or sculpture made from clay, air-dried or fired.

40. Textile Art

Weaving, macramé, machine embroidery and collage. Flat or raised surface, in 2D or 3D. Includes soft furnishings such as cushions, table linen, bed linen, bath linen, rugs, etc.

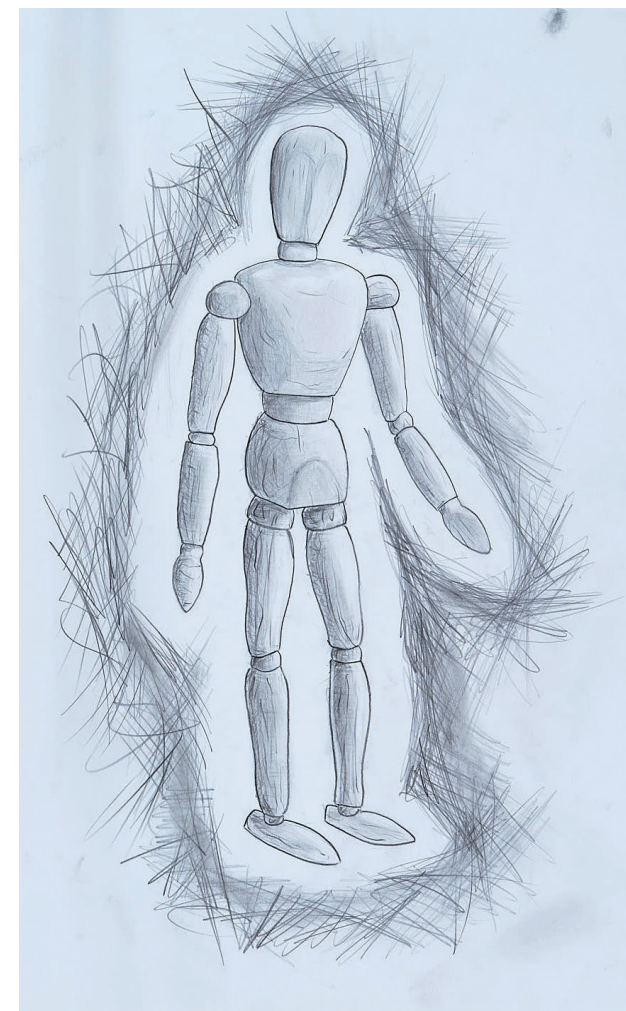
All artwork should be original. The judges will not assess copies of other people's artwork highly and we can't sell direct copies or artworks made from kits.

We do accept drawings or paintings based on photographs, but, again, you will score higher with our judges if you develop your own style rather than copying exactly.

If your entry is very large, heavy, valuable or fragile, please ring us: we may need it to be delivered and collected.

In artforms marked 📷 you may enter by sending photographs with notes. Show the entry from all sides in good light, give its dimensions, and explain fully how it was made. If we choose the entry for exhibition, we may ask you to send the actual item.

If you use degradable materials, please enter your work in a sealed container so it does not attract vermin or insects. This work may degrade while in our possession.



Mannequin, HMP & YOI Forest Bank, First-Time Entrant Award for Drawing

Craft and design

41. Handmade Book

A handmade original or limited-edition artist's book, containing visual artwork and/or text. The judges will be looking for creativity and artistry in the binding and content.

42. Calligraphy

Hand-lettering of your own or others' words in any language. May include street art-style lettering, decoration and pictorial elements.

43. Handmade Greetings Card

44. Graphic Design

A printed item with images and text which may be produced or formatted by computer, e.g. a poster, leaflet, booklet, sign, logo or up to 3 issues of a magazine, judged for visual quality. Also includes web design which should be submitted on CD or DVD with a printout on paper.

45. Matchstick Model

May be coloured and include other supporting materials.

46. Craft

Including toys, jewellery, mosaics and paper folding.

47. Woodcraft

Emphasis on skills in joinery, veneering, marquetry, turning, carving and fine decoration. Metal and other materials may be added.

48. Furniture

Only photographs may be submitted. Do not send the original item. Any material may be used.

49. Needlecraft

Knitting, crochet, needlepoint and any other items made by hand using needles or hooks. Include explanatory notes, preparatory sketches and any pattern used.

50. Fashion

Dressmaking and tailoring. Include explanatory notes, preparatory sketches and any pattern used.

51. Hairstyling

Includes cutting, dying, styling and braiding.

52. Beauty

Including make-up, theatre make-up and nail art.

All artwork should be original. The judges will not assess copies of other people's artwork highly and we can't sell direct copies or artworks made from kits.

In artforms marked you may enter by sending photographs with notes. Show the entry from all sides in good light, give its dimensions, and explain fully how it was made. If we choose the entry for exhibition, we may ask you to send the actual item.

If your entry is very large, heavy, valuable or fragile, please ring us: we may need it to be delivered and collected.

Terms & conditions of entry



Bird Cage - Imprisoned!, HMP Exeter, Paper Craft Gold Award for Craft

Who can enter?

- » Anyone in custody in a UK prison, young offender institution, secure training centre, secure children's home, immigration removal centre, or high or medium security psychiatric hospital or unit (including the Channel Islands and Isle of Man).
- » Any current client of the National Probation Service or a Community Rehabilitation Company, a Youth Offending Service, the Scottish Criminal Justice Social Work Service or their equivalents elsewhere in the UK.
- » Any UK citizen currently in a prison overseas (must submit via Prisoners Abroad).
- » You may enter as an individual or as a group.


What can I enter?

- » You can enter original work in any of the artforms listed in this Guidance, up to a maximum of 5 in total.
- » Generally entries must have been created in the last 12 months. However, if you couldn't enter your artwork into the 2020 Awards due to Covid-19 lockdowns, you may enter it into the 2021 Awards – even if it was made more than 12 months ago.
- » Do not enter artworks copied directly from other artworks.
- » Do not enter work that includes your name in the artwork or work made through purchased kits.



Dene, The Black Dog
Priory Hospital Burgess Hill,
Highly Commended Award
for Sculpture

How do I enter?

- » You can submit up to 5 entries into the Koestler Awards. Fill in 1 entry form for each entry. You are welcome to photocopy the form.
- » Ask an authorised member of staff to sign each form and give their contact details. We cannot accept your entry if it is not approved and signed-off by an authorised member of staff. The staff member should consistently work in your establishment, they should not be temporary project worker, for example. In the community, an authorised member of staff should be a probation officer or an equivalent professional case worker.
- » In artforms marked  you may enter by sending photographs.
- » You can send items up to 2kg free using 'Freepost KOESTLER ARTS'.
- » Pack your work carefully so that it reaches us safely. The maximum weight limit is 15kg per parcel. Many establishments send a van of entries each year - ask if this happens at your establishment.

Will my name be made public?

- » You and the member of staff signing your form can choose for you to use first name only or you can remain anonymous. We will make your first name public in exhibition only if you are aged 18 or over and we have permission on the entry form, both from you and an authorised member of staff.
- » Please think carefully about having your first name shown, especially if it may identify you as an offender to relatives, employers or the press. We cannot accept responsibility for any repercussions.
- » You and the authorised member of staff who signs your entry form should consider if there are sensitivities around your first name being published next to your artwork, particularly concerning victims of a crime or heightened media profile.
- » Don't sign your artwork with your full name, or put it on the back of your work, or otherwise reference it in the entry. If you do, we will need to remove it before exhibition or sale, or may not be able to display your work.

Selling visual artwork

- » Koestler sales are for visual arts and crafts only.
- » We will sell your work only if we have permission from you and from your establishment.
- » If your work does not sell we will return it to you, unless you have donated it to Koestler Arts.
- » We purchase a small amount of works annually for our collection, with a view to exhibiting them at future displays and events.
- » If your work sells you get 50% of the sales price. At the same time it raises money for Koestler Arts (25%) and Victim Support (25%).
- » If your work is for sale tell us the minimum amount you'd like to receive. We'll then make the sales price double this. The lowest amount you can receive is £10 (sales price £20) and the highest amount is £250 (sales price £500). If you indicate that you'd like to receive more than £250 we'll be unable to sell it, and it will be marked 'not for sale'.
- » If your work can be sold but you do not indicate a minimum price we will price it for you.
- » You can also choose to donate your artwork to Koestler Arts. This means it will not be returned to you and if sold the money raised will help us to continue our work.

We will not sell lower than the price you indicate, but we may try and sell your work for more! But, if you are keen to sell, bear in mind, that most online and Pop-Up Shop purchasers are looking to spend less than £100.



Koestler Pop-Up Art Shop at Southbank Centre

How will I get any money from prizes or sales?

- » We issue prize money in October and money from sales in December.
- » If you are in a prison or secure setting, we send the money in a cheque to your establishment. The Finance staff will credit it to your private cash.
- » If you are not in custody we can issue a cheque in your name, or you can collect cash from the Koestler Arts Centre if you let us know beforehand.
- » Scotland only: Artists in Scottish prisons are aware that they cannot directly benefit from the sale of their artwork. If an artist does agree that their work can be sold, the monies raised will be sent to the establishment to be placed in the 'common good fund' or similar. An artist can of course choose not to sell, or to donate their work to Koestler Arts. This does not affect any potential prize money, which the artist will receive.

How will my entry be returned?

- » We pack all artwork carefully for its return journey.
- » If you are in a secure setting, we will return your work there, usually to the Education Department.
- » If you are in the community, we will return your work by post if you provide your home address (UK only).
- » You or your establishment can really help us keep costs down by coming to collect your work. Please let us know beforehand so we can have it ready.
- » Apart from a few exceptions, writing, performance, audio, film and animation entries will not be returned – please only send copies.



Clean View, HMP Peterborough, Themed Category: Window

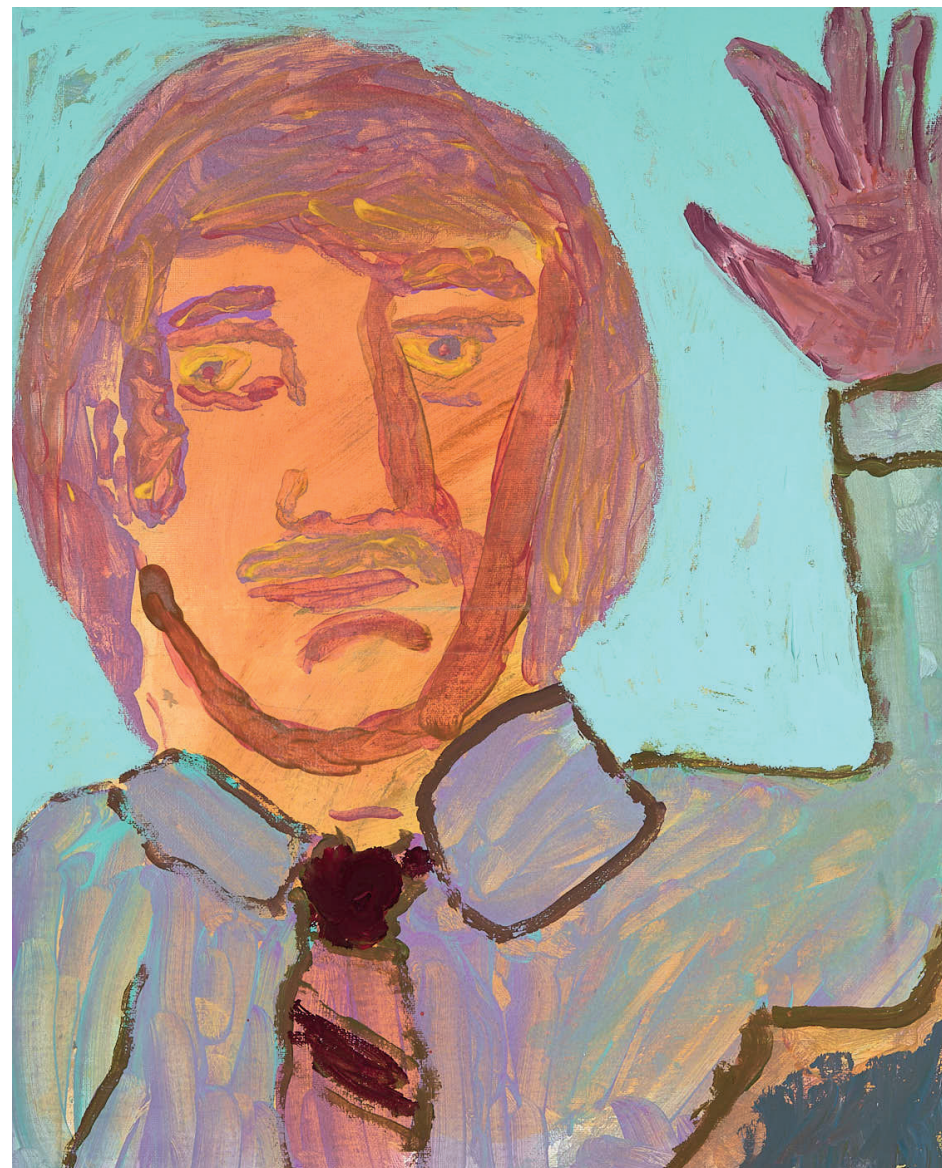
What other conditions are there?

By entering the Koestler Awards, you agree to all the Terms & Conditions of Entry set out in this Guidance. Also:

- » Information included on the entry form can be held on the Koestler Arts secure database. If you would like a copy of the Koestler Arts Privacy Policy or Safeguarding Policy, you can view them on our website or write to us.
- » All artworks are handled by our team with the utmost care. In the unlikely event of damage or loss, for example in transit to us, Koestler Arts will do what it can to put things right. But the charity and its agents accept no liability for loss or damage to entries.
- » Artists always retain copyright of their work. By entering the Koestler Awards you agree that we can exhibit, publish, and reproduce your entry in reasonable ways in print, merchandise, online, film, audio etc. We can allow press and other partners to do so in reasonable ways, to promote our work.
- » The Koestler Awards decisions are final – we will not enter into any correspondence about these decisions. Entrants must not attempt to correspond with Koestler Awards judges.
- » Visual artwork left unclaimed or donated for more than 1 year from the end of March 2022 may be destroyed, sold or donated.
- » One of our aims at Koestler Arts is to demonstrate that the arts are beneficial to offenders, secure patients and detainees. We need evidence to show to funders and policy makers. We would be very grateful if you agreed to help with this by completing the Monitoring for Diversity section on the entry form. Any research carried out will only use anonymised data.



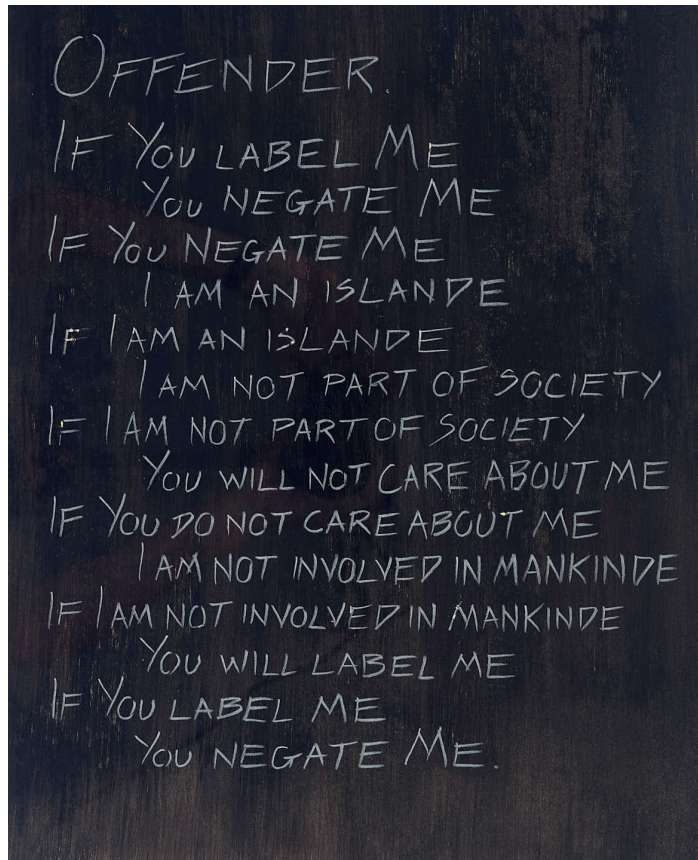
Hope, HMP & YO1 Low Newton, Bowman Smart Bronze Award for Textile Art



Waving to the World, St Mary's Hospital, Commended Award for Portrait

Koestler Arts timeline

22 April	Closing date for all 2021 entries to reach Koestler Arts Centre
June to July	Judging of entries
End August	Awards results published on our website
September to November	UK exhibition at Southbank Centre
End October	Certificates and prizes sent out
End December	Sales money sent out
January 2022	2022 entry forms published
End of March 2022	All visual entries returned.



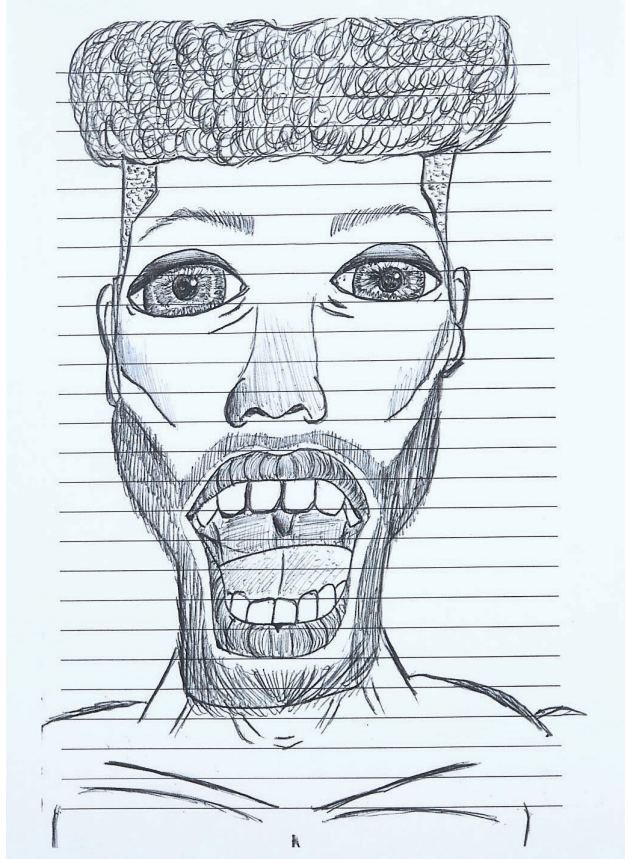
Offender
Littlehampton Probation,
Calligraphy

5 top things to remember

1. You can enter up to five original works
2. Your entries should not contain your name
3. Include a completed entry form with every entry
4. Your entry form must be signed by an authorised member of staff
5. Tell us if you move address

Like a balloon, full to bursting point. I've been writing all my life, since I was a kid. I wasn't always confident with it, and kept it hidden for years and years. Since I have learned to trust myself and others and let people hear what I have to say, I've felt very balanced inside.

**2020 Koestler Awards
Entrant**



Koestler Arts
168A Du Cane Road
London, W12 0TX

Freepost KOESTLER ARTS
(Freepost contents can weigh up to 2kg)

☎ 020 8740 0333
✉ info@koestlerarts.org.uk
🐦 @KoestlerArts
🌐 koestlerarts.org.uk

Registered charity no. 1105759

Going Mad
Sandwell Youth Offending Service,
Portrait

Cover: *Meltdown*
HMP Long Lartin, Patrick Holmes
Platinum Award for Painting

Design: playnedeign.co.uk